

Antenociticus

ANCIENT STORIES IN STONE

A stone head was discovered in the remains of a small **temple** in Benwell. This temple - and the head! - belong to the local Romano-British god **Antenociticus**. The Romans liked to make statues of their gods, but Antenociticus is special: from his head we can see he has a mix of Roman and local Celtic styles.



Roman men wore a long white robe called a **toga**!

Celtic men wore a **tunic, belt, trousers** and a **cloak**.
Britannia is chilly!



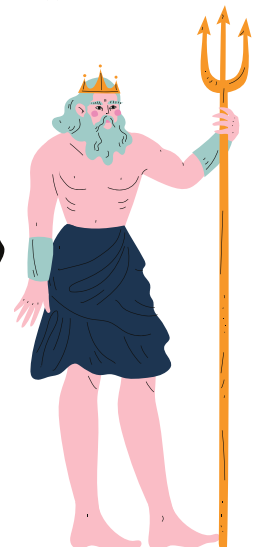
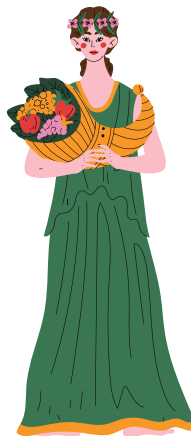
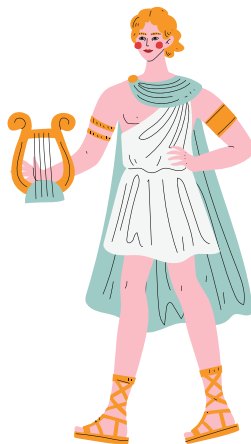
In statues, Roman gods and goddesses would often hold **objects** which represented their powers - can you work out who is who using the clues below?

NEPTUNE
God of the Sea

MINERVA
Goddess of war

APOLLO
God of music

CERES
Goddess of harvest



Help restore Antenociticus!

Can you help draw the rest of Antenociticus? Remember his statue is a mixture of Roman and Celtic styles. What could he hold that would tell everyone he is a local god?



The Body

Match the Latin body part to the correct meaning! Each Latin word has an English clue underneath to help you work it out...

caput

clue: at the top, like the
captain of a ship!

eye

oculus

clue: what looks through
binoculars?

finger

nasus

clue: where does a *nasal*
spray go?

feet

pectus

clue: the *pectoral* muscle
- sometimes shortened to
'pecs'!

head

digitus

clue: people used to
count with their *digits*

arm

manus

clue: doing something
manually means using
your...?

nose

bracchium

clue: where is a *bracelet*
worn?

chest

pedes

clue: what do you need
to *pedal*?

hand